

Scouts



Central Norfolk



Well done...

You survived!

So... how was that!?

You've hopefully made it through your first time helping us out! Thank you so much for considering joining us. We hope you're still keen!

This booklet is to give you a bit more information, outline the next steps, and will add to what you've hopefully been told by someone in person.

And that's key - there is so much information out there it can be a bit mind boggling to start with - so booklets like this and all the online resources in the world can't beat the personal touch. So if you have a question, or are unsure about something, please ask!

One really important thing... we want you to get just as much out of this experience as the young people do. If there's something going on that you like the look of, but don't know how to get involved, let us know.





WARNING



WA

AV
KZ

750 KGS

The Magic of Scouting

Scouting aims to offer challenge and adventure to all its members. We believe in helping our young people fulfil their potential by working in teams, learning by doing and thinking for themselves. We're working to make Scouting available to all and we're passionate about what we do.

Through the adventure of Scouting young people get to take risks in a safe environment and have their first taste of responsibility. We give our members experiences they'll never forget.

Adventure means the chance to experience something different and the opportunity to discover their potential. Whether it's a Beaver Scout waking up the morning after their first sleepover, or a Scout Network member completing an international expedition — that's adventure.

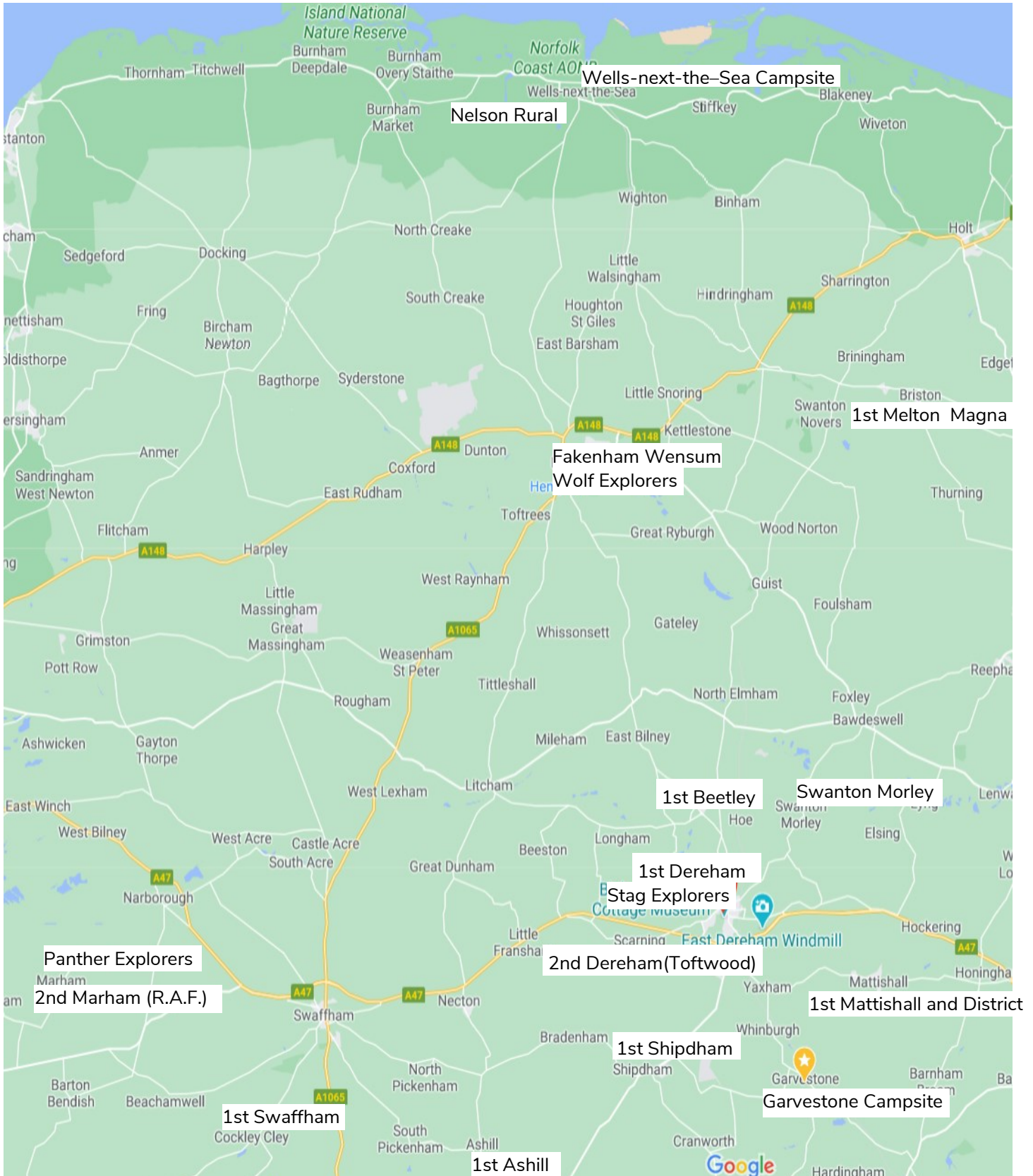
All this is made possible by the efforts of our dedicated team of hard working voluntary adults. Our training scheme and one-to one support ensures that each of our volunteers gets to make the best use of their skills and talents.

Our adults' challenge is to make the programme they deliver to young people fun and exciting. They also make sure that it is safe: the Scout Association's policies, rules, code of behavior and advice on child protection and safety are there to ensure our young people stay safe while they enjoy themselves and learn.



Central Norfolk District

Central Norfolk District is made up of 12 Scout Groups, 3 Explorer Units and 2 Campsites



Key District Contacts

The District Commissioner is responsible for all aspects of Scouting in Central Norfolk District. Please contact the DC if you need to know anything at all, or have any concerns:

District Commissioner s.lonsdale@norfolkscouts.org.uk

For General enquiries about Scouting, contact the Scout Information Centre 0345 300 1818

info.centre@scouts.org.uk

Our Youth Commissioner is responsible for ensuring all young people have a voice, and also ensures that all decisions we take at District level are Youth Shaped:

District Youth Commissioner

Our Appointments Secretary is one of the key people who will guide you through the process of starting out as a volunteer with us:

Appointments Secretary carolinelonsdale@hotmail.com

If you are volunteering with a Scout Group visit

<http://www.norfolkscouts.org.uk/district/central-norfolk>

for info about them

Your Section

BEAVERS

Beavers are our youngest members, aged 6-8 years and generally meet for an hour per week. They are introduced to outdoor activities, being creative, exploring and going on sleepovers.

Contact our ADC* Beavers via [TBC](#)

cubs

Our next Section is the Cubs for girls & boys aged 8-10½.

Excitement & adventure are key with a huge variety of activities to do with fitness, global and beliefs together with camps and residencies. Contact our ADC* Cubs is Lesley Weston and can be contacted via lsywstn@msn.com

SCOUTS

Scouts for 10½-14 year olds aims to build and develop confidence, sense of adventure and outdoor skills, as well as encouraging them to explore their beliefs and attitudes and be creative. Contact our ADC* Scouts via TBC

*Assistant District Commissioners for Beavers, Cubs and Scouts are there to support Leaders delivering the programme in their own Groups, together with coordinating the organisation of District activities and events when we can all come together.

Explorer Scouts

Explorer Scouts is our fourth age range and caters for young men & women aged 14-18 years. Explorer Scout Units are not part of Scout Groups, they're at District level.

Even if you're not volunteering with this Section, you will no doubt come into contact with them and many other Sections have Young Leaders who are Explorer Scouts.

Our District Explorer Scout Commissioner (DESC) is responsible for the Explorer Scout Section in Central Norfolk District including providing direct support for Leaders. Our DESC is Richard Green and you can contact him on richardgreen63@hotmail.com

Our DESC is also responsible for the operation of the Young Leaders Scheme in Central Norfolk District and, assisted by their team, puts on the full range of training Modules, helps with Missions and provides support for Beaver, Cub and Scout Leaders with regards to Young Leaders.



Flexible volunteering

You may have come along tonight without any clear idea of what role you wish to do in Scouting. That's fine - in fact, we recommend that you take a bit of time to find out a bit more and don't decide until you've been helping for a few weeks!

There are several main types of roles in Scouting. The time commitment, and training which we will want you to undertake, will depend on what you do...

Leader

This is the adult who is overall in charge of the Section and works with the rest of the team to ensure everyone knows what they are doing and the Section runs as it should.

Assistant Leader

This role is pretty much the same as the Leader, but they are not in overall charge, unless the Leader is away.

Section Assistant

This person basically just turns up and helps out, doing whatever they agree with the Leaders and Assistant Leaders. There isn't as much training to do with this role.

Supporter

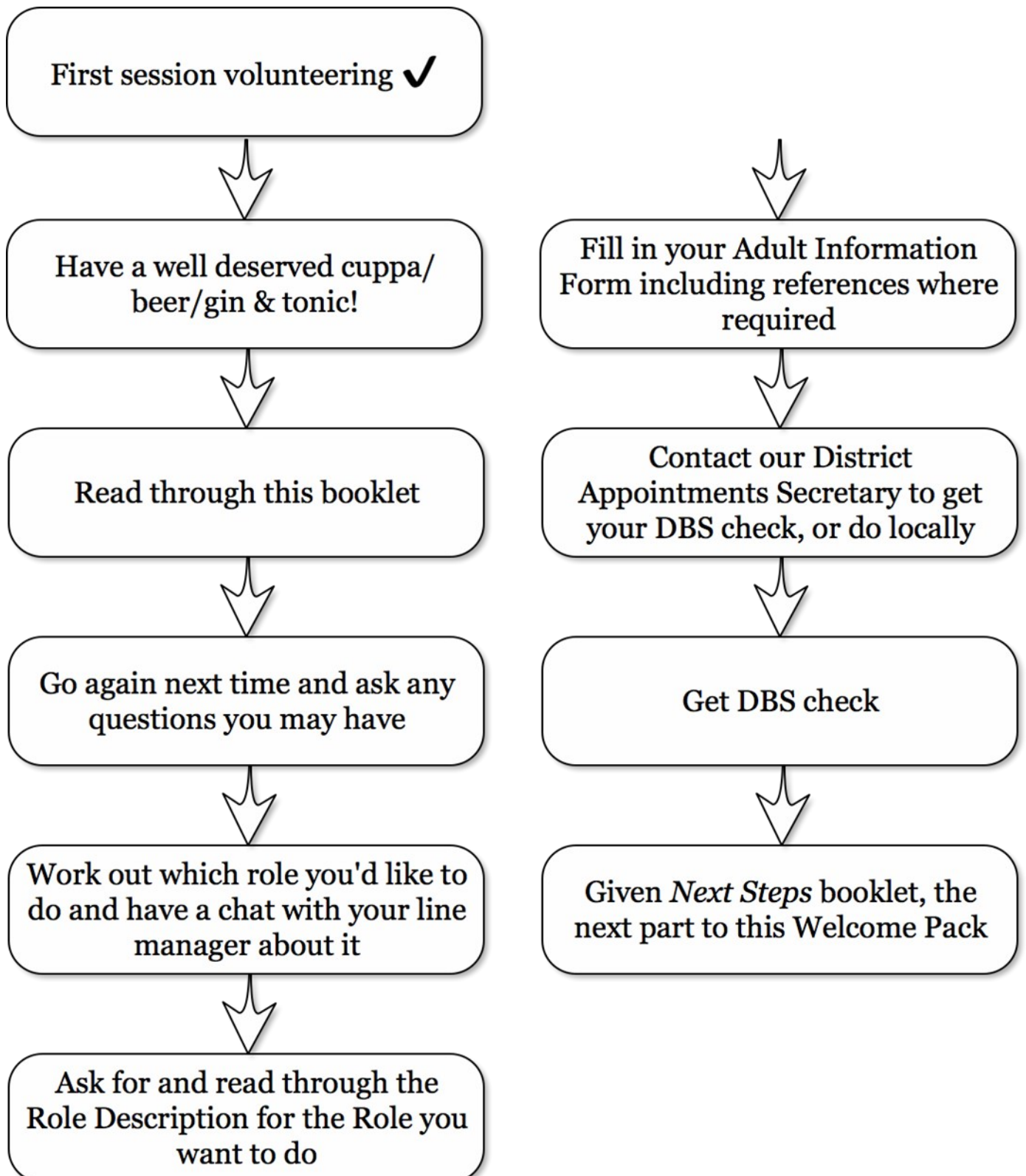
This is a role which doesn't involve working with young people but which is just as important, such as supporting other Leaders, administration or equipment management

Manager

This is a volunteer who is responsible for line managing other volunteers, such as Group Scout Leader or District Commissioner

What's next...?

Who doesn't like a nice flow chart!?



Young people first

Safeguarding – a code of practice

This card contains essential information for all adults in Scouting. Please keep it with you at all times.

Version 7, Nov 2018
scouts.org.uk/safeguarding



Safe Scouting and what to do in an emergency...

This card is for all adults in Scouting. It contains essential information – keep it with you.

scouts.org.uk/safety



Scouting and alcohol

Checklist for adults

The poster sets out our policy on alcohol for all adults involved in Scouting. Drinking alcohol can put adults in a compromising position regarding their responsibilities for safeguarding and their duty of care. Also, as an adult in Scouting you are a role model for young people. When adults are responsible for young people, they must not drink alcohol.

During Scouting events attended by young people under the age of 18, the following rules apply.

- Under 18s must not drink alcohol under any circumstances.
- There must be the correct ratio of adults responsible for young people at all times.
- If you are responsible for young people you must not drink alcohol.
- If you are not directly responsible for young people, and you do drink alcohol, you should still follow the Yellow Card first safeguarding code of practice.
- If you are drinking when 'off duty', you should consider how alcohol may affect your ability to carry out your Scouting duties when back on duty.
- Young people must know who is responsible for them at all times.

Support and planning

- Carry out a risk assessment.
- Consider drawing up a code of conduct before events where alcohol will be present.
- At larger events, consider how drinking alcohol might affect someone's ability to carry out their Scouting duties or participate in activities over time. For example, if someone drinks excessively of any they may not be fit to carry out their duties or participate in activities the following morning.
- Brief all young people and adults on the standards of behaviour expected from them.
- Take care to be clear which adults are responsible for the young people when there is a mix of adults present who may or may not be drinking alcohol.
- Consider naming alcohol-free events.
- Consider the cultural and religious observances or needs of those taking part in the event.
- Members of the Scout Network or a Scout Active Support Unit are expected to follow the same rules as adult leaders.
- Help young people and adults understand the issues associated with alcohol and how to find information and advice.

If you would like more information, contact your line manager or the Scout Information Centre.
Phone: 0345 300 818 Email: info centre@scouts.org.uk


scouts.org.uk/safeguarding

Staying safe

Safety checklist for leaders

scouts.org.uk/safety
Version 4, 2018



Scouts

Norfolk